

SENSIT[®] RAMP

REMOTE AIR QUALITY MONITORING PLATFORM

UP TO FIVE GASEOUS
CHEMICAL POLLUTANTS



COMPATIBLE WITH



SENSIT[®] RAMP

REMOTE AIR QUALITY MONITORING PLATFORM

A REMOTE AIR QUALITY MONITORING PLATFORM & POLLUTION DATA MANAGEMENT SYSTEM



The **SENSIT[®] RAMP** is an easily deployable, low-cost air quality monitoring platform that is capable of monitoring up to five gaseous chemical pollutants, temperature, humidity, particulate matter, and meteorological conditions.

Electrochemical sensors offer PPB, parts per billion, resolution for CO, NO, NO₂, O₃, and SO₂ gases. An integrated PM_{2.5} particulate matter sensor measures pollutants in the atmosphere.

Other **SENSIT[®] RAMP** features include internal SD storage, optional solar charging and global cellular integration for remote operation. Additional instrumentation may be integrated via four I/O ports on the side of the unit.

STANDARD FEATURES

Durable, Weather Resistant Housing

Long Life, Low Cost Sensors

Local Or Remote Operation

Wireless Cellular

Sd Card Data Backup

Backup Battery

STANDARD SENSORS

CO₂ - Carbon Dioxide

CO - Carbon Monoxide

NO - Nitric Oxide

NO₂ - Nitrogen Dioxide

O₃ - Ozone

SO₂ - Sulfur Dioxide

PM₁, PM_{2.5}, PM₁₀ - Particulate Matter

TVOC (PID or MOS), Temperature, & Relative Humidity, Anemometer

APPLICATIONS

Natural Gas & Energy	Remote Air Quality Monitoring	Environmental	Environmental Impact Studies Pollutant Source Identification
Municipal Government Services	Traffic Pattern Optimization	Emergency Response	Wildlife Air Quality Monitoring
Industrial Health & Safety	Industrial Site Monitoring	HVAC & Plumbing	Remote Air Quality Monitoring

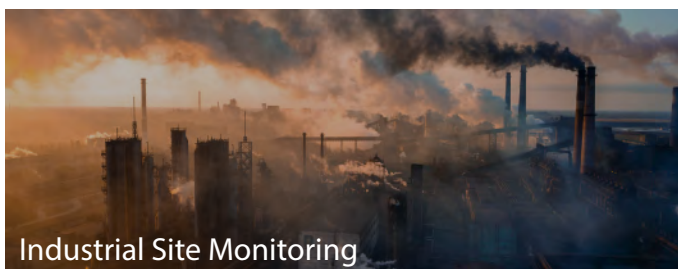
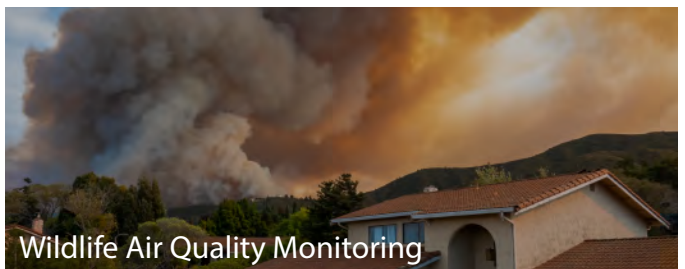


STANDARD KIT

USB Adapter
Charging Cable

OPTIONAL HARDWARE:

Solar Panel
Tripod
Mechanical Anemometer
Ultrasonic Anemometer
Outdoor Power Supply



PRODUCT SPECIFICATIONS

Size: Fully assembled without anemometer or antenna D x W x H (5" x 10" x 12")
Weight: Base unit: 7.5 lbs
Operational Temp: -20°C to 50°C
Mounting: Attached Mounting Flanges
Voltage Requirements: 18V – 24V DC Charging (wired adapter or solar panel)
Current Requirements: 1A Max Current Draw when Charging
Operating Runtime: 3-15 Days Battery Backup
Operating Temp: -20°C to 50°C
Data Outputs: Digital Wired Output (3.3V TTL - USB) Wireless (Cellular Included) SD Card Data Backup

SENSOR SPECIFICATIONS

SENSORS	DETECTION METHOD	RANGE (STANDARD)	ACCURACY (STANDARD)	RESPONSE TIME (STANDARD)	RANGE (HIGH)	ACCURACY (HIGH)	ACCURACY (STANDARD)
CO	NDIR Optical	100-2000ppm	±100 ppm min or 50%	30 sec	400-10,000ppm	±400 ppm min or 30%	30 sec
CO ₂	Electrochemical	20ppb-25ppm	±20ppb min or 50%	60-90 sec	1-1000ppm	±2 ppm min or 10%	< 30 sec
NO	Electrochemical	20ppb-25ppm	±20ppb min or 50%	60-90 sec	1-1000ppm	±2 ppm min or 10%	< 30 sec
NO ₂	Electrochemical	20ppb-25ppm	±20ppb min or 50%	60-90 sec	1-1000ppm	±2 ppm min or 10%	< 30 sec
O ₃	Electrochemical	20ppb-25ppm	±20ppb min or 50%	60-90 sec	1-1000ppm	±2 ppm min or 10%	< 30 sec
SO ₂	Electrochemical	20ppb-25ppm	±20ppb min or 50%	60-90 sec	1-1000ppm	±2 ppm min or 10%	< 30 sec
PM2.5	Laser Scattering	1-1000 µg/m3	±10 µg min or 50%	12-30 sec	1-1000 µg/m3	±10 µg min or 50%	15-30 sec

Periodic Maintenance

Periodic cleaning of sensor openings of dust. User replacement of sensors is easily performed as needed.

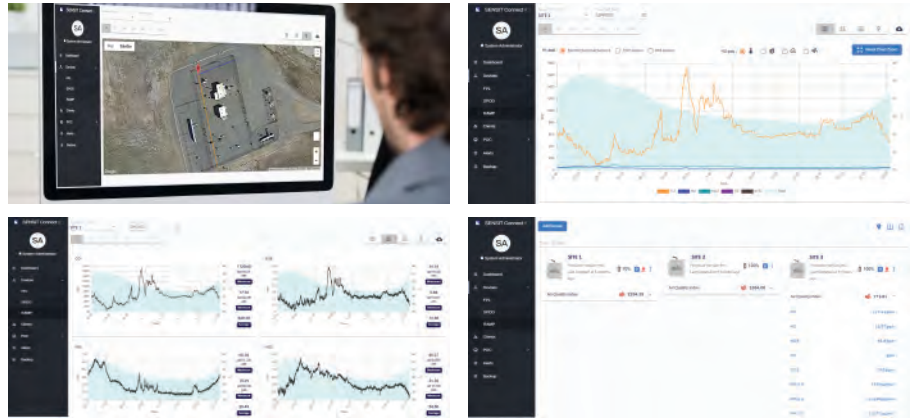
Additional Included Sensor

Additional sensors can be added (external ports)



is a web-based application portal for viewing and managing SENSIT Environmental Monitors.

This portal allows remote access to: real-time and archived data, data visualization tools, sensor health and settings, device location and tracking information, notification options and parameters, and can assist with leak location identification and quantification estimates.



SENSIT® RAMP Accessories & Replacement Parts

RAMP PM, CO ₂ , T, RH, CO	Part # 938-RAMP0-50
RAMP PM, CO ₂ , T, RH, CO, O ₃	Part # 938-RAMP0-51
RAMP PM, CO ₂ , T RH, CO, O ₃ , NO ₂	Part # 938-RAMP0-52
RAMP PM, CO ₂ , T, RH, CO, O ₃ , NO ₂ , SO ₂	Part # 938-RAMP0-53
RAMP PM, CO ₂ , T, RH, CO, O ₃ , NO ₂ , NO	Part # 938-RAMP0-54
RAMP PM, ENVIRO, CO, O ₃ , NO ₂ , NO	Part # 938-RAMP0-55
RAMP PM, ENVIRO, T, RH, NO ₂ , O ₃	Part # 938-RAMP0-56
RAMP PM, VOC, T, RH, CO, NO, NO ₂ , SO ₂	Part # 938-RAMP0-57
RAMP PM, T, RH, CO, NO, NO ₂ , SO ₂	Part # 938-RAMP0-58
RAMP PM, VOC, T, CO, O ₃ , NO ₂ , SO ₂	Part # 938-RAMP0-59
RAMP PM, ENVIRO, CO, O ₃ , NO ₂ , SO ₂	Part # 938-RAMP0-60
Solar Panel	Part # 870-00113
Tripod	Part # 870-00132
Mechanical Anemometer	Part # 870-00108
USB Aadapter	Part # 870-00116
Charging Cable	Part # 871-00071

OPTIONAL ELECTROCHEMICAL SENSORS:

- H₂S - Hydrogen Sulfide
- NH₃ - Ammonia
- Cl₂ - Chlorine
- ClO₂ - Chlorine Dioxide
- VOCs - Volatile Organic Compounds
- HCN - Hydrogen Cyanide
- ETO - Ethylene Oxide



Gas Sensors

Distributed by:



851 Transport Drive
Valparaiso, IN 46383-8432

Phone: 888 4SENSIT
888 473 6748
219 465 2700

Fax: 219 465 2701
www.GasLeakSensors.com



MADE IN THE USA
WITH GLOBALLY SOURCED COMPONENTS

SENSIT Technologies
is an ISO 9001:2015 certified company.

