

GAS TRAC[®] FPL

FIXED-POINT LASER METHANE EMISSIONS MONITOR

ADVANCED LASER
TDLAS TECHNOLOGY



COMPATIBLE WITH



SENSIT
Technologies

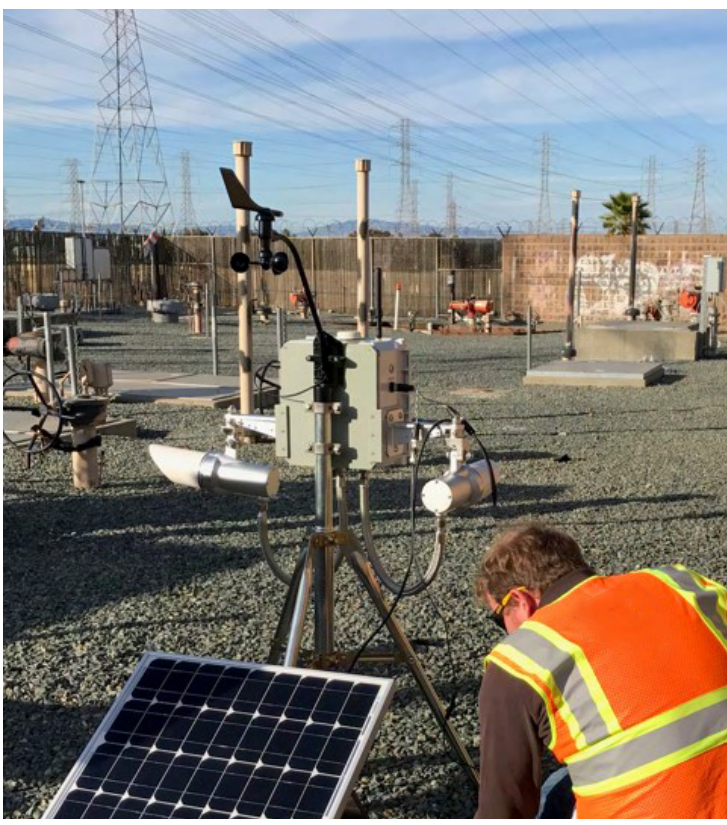


Optics by ACUTECT

GAS•TRAC® FPL

FIXED-POINT LASER METHANE EMISSIONS MONITOR

OPEN-PATH LASER-BASED MONITOR CAPABLE OF A BROAD RANGE OF DETECTION & ALARMS



Problems with fugitive methane emissions that require 24/7 monitoring?

SENSIT Technologies introduces the **GAS•TRAC® FPL!**

The **GAS•TRAC® FPL** is methane selective and utilizes state of the art TDLAS (tunable diode laser absorption spectroscopy) technology, providing the ultimate solution in field performance, data management, flexibility, safety and security.

It can be deployed on-site in less than an hour. While considered a “fixed point” monitor, the **GAS•TRAC® FPL** is easy to disassemble and reassemble where it is needed. No power? No problem. Integrated solar panels charge the built-in battery, making the **GAS•TRAC® FPL** self-sustaining and perfect for remote locations like storage fields, compressor stations, and well heads.

Analytics and site data stream in real time via GSM cellular for easy and reliable remote viewing. The system includes customizable alarms, self-calibration, automated alerts and much more!

STANDARD FEATURES

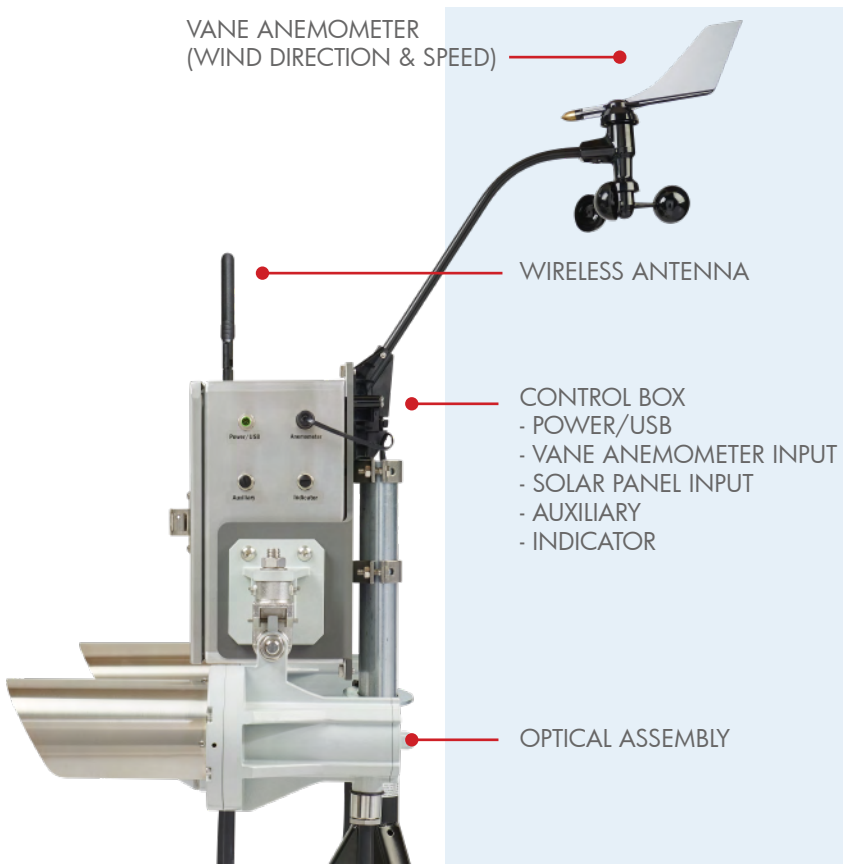
Methane Selective	Includes Vane Anemometer (Wind Direction and Speed)
Dual Optical Assembly for Detection	Reflector Plate
Up to 50 Meter Standard Detection Range	Tripod
Solar Powered with Built-in Rechargeable Battery	Ambient Temperature Monitoring
Wireless Communication to Secure Server	Ambient Pressure Monitoring
Continuous Datalogging	Relative Humidity Monitoring

OPTIONAL FEATURES

Defrosting Function to Prevent Signal Loss
Greater than 50m Detection Distance*
*Consult SENSIT for Longer Path Length

APPLICATIONS

Natural Gas & Energy	Upstream Midstream Downstream
Municipal Government Services	Landfill Emissions Testing
Industrial	Steel Industry Petrochemical Facilities Paper & Pulp Production



VANE ANEMOMETER
(WIND DIRECTION & SPEED)

WIRELESS ANTENNA

CONTROL BOX
 - POWER/USB
 - VANE ANEMOMETER INPUT
 - SOLAR PANEL INPUT
 - AUXILIARY
 - INDICATOR

OPTICAL ASSEMBLY



STANDARD KIT

- Two Optical Assembly
- Yearly verification cell
- Reflection Plates
- Controller Box
- Vane Anemometer
- Tripod
- Solar Panel
- Instruction Manual

OPTIONAL HARDWARE:

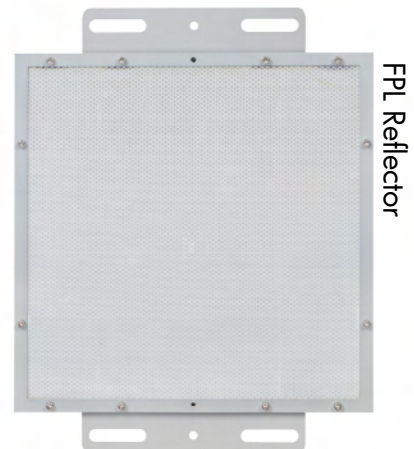
- Ultrasonic Anemometer
- Indicator/ Alarm Light
- Alarm Siren
- Calibration Cell

SENSOR SPECIFICATIONS

SENSITIVITY	RESOLUTION	RANGE	ACCURACY	TIME
2PPM-M (200ppb @ 10m)	1PPM-M	0-10,000PPM-M	±5PPM-M @30m	Less than 1 Sec
2PPM-M (200ppb @ 10m)	1PPM-M	0-10,000PPM-M	±10% @50m	Less than 1 Sec

PRODUCT SPECIFICATIONS

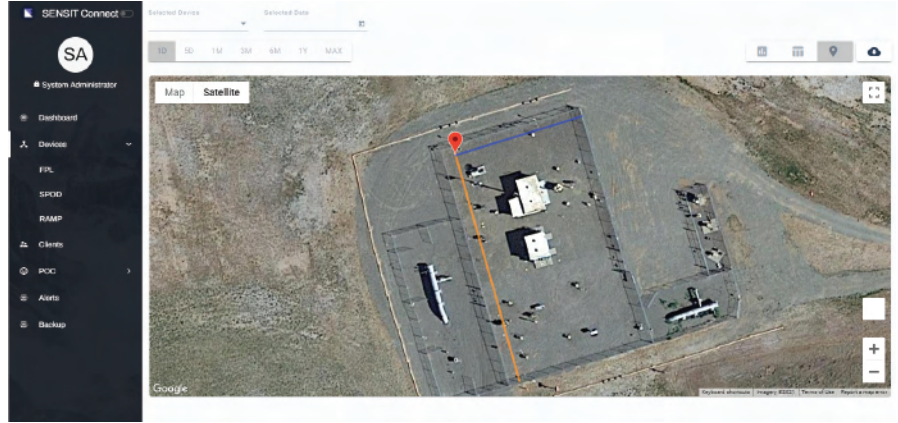
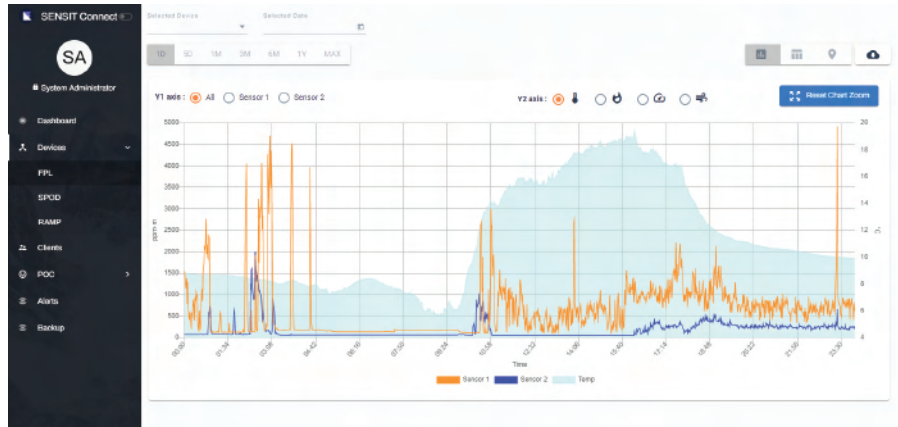
Size: Optical Module- 340mm x 144mm x 265mm (13.5in x 6in x 10.5in) Reflection Plate- 500mm x 10mm x 400mm (20in x 0.5in x 16in)
Weight: 22kgs (50lbs)
Operational Temp: -20°C to 50°C (-4°F to 122°F)
Operating Humidity: Relative Humidity ≤98%
Storage Temp: -40°C to 60°C
Battery Life: 4 Days without Recharge via Solar Panel
Power Requirement: Built in Rechargeable Battery Maintained by Solar Panel
Power Consumption: Less than 2 Watts
Environmental Pressure: 68kpa-115kpa
Laser Safety: Class IIIr
Detection Technology: Open Path, Tunable Diode Laser Absorption Spectroscopy (TDLAS), Methane selective
Detection Distance: 5-165ft Standard, Longer Detection Distance Available
Enclosures: Aluminum, NEMA 4X (Designed to Meet IP65)
Communication Interface: Monitor/Receive Alerts via Computer, Smartphone, Tablet
Intrinsic Safety: Laser Optical Assembly is Designed to Meet US Class 1 Div 2 and European Zone 2 Requirements





SENSIT CONNECT.NET is a web-based application portal for viewing and managing **SENSIT** Environmental Monitors.

This portal allows remote access to: real-time and archived data, data visualization tools, sensor health and settings, device location and/or tracking information, notification options and parameters, and can assist with leak location identification and quantification estimates.



Site	Last Update	Battery Level
SITE 1	8 months ago	100%
SITE 2	31 minutes ago	54.86%
SITE 3	15 minutes ago	54.86%
SITE 4	25 minutes ago	54.86%

GAS•TRAC® FPL
Accessories & Replacement Parts

GAS•TRAC® FPL	Part # 932-00000-01
Controller Box	Part # 832-00000-01
Laser Assembly	Part # 870-00103
Vane Anemometer	Part # 870-00108
Solar Panel	Part # 870-00110
Ultrasonic Anemometer	Part # 870-00114
Indicator/ Alarm Light	Part # 870-00107
Alarm Siren	Special Request
Calibration Cell	Part # 882-00165
Tripod	Part # 870-00109
Fixed Point USB Adapter	Part # 870-00116
Fixed Point Charging Cable Assembly (AC Power Adapter)	Part # 871-00071



851 Transport Drive
Valparaiso, IN 46383-8432

Phone: 888 4SENSIT
888 473 6748
219 465 2700

Fax: 219 465 2701
www.GasLeakSensors.com



MADE IN THE USA
WITH GLOBALLY SOURCED COMPONENTS

SENSIT Technologies is an ISO 9001:2015 certified company.



Distributed by:

